



Escuela de español



Spanish Summer camp 2025

Pearrival Info

Everything you need
to know





SPANISH COURSES FOR TEENAGERS IN VALENCIA





Index

1.- Arrival and first day	4	4.- Activities	6
Arrival at the airport / station	4	Meeting place	6
Your first day	4	Example of a weekly programme	6
2.- The Spanish course	4	5.- Supervision and security	7
Course material	4	Free time	7
Attendance	4	Curfews	7
Changing levels	4	6.- Insurance and medical care	8
Course certificate	4	7.- Useful info	8
3.- Accommodation	5	8.- Departures	9
In host family:	5	9.- Questions and problems	10
Bedroom	5	10.- Useful tips/ Check list	10
Bathroom	5	11.- In case of emergency	10
Meals and special diets	5	12.- Rules for Teen summer programmes	11
Linen and towels	5	13.- Some photos	12
Laundry	5		
Cleaning	5		
Key	5		
In residence:	5		
Bedroom	5		
Bathroom	5		
Meals and special diets	5		
Linen and towels	5		
Laundry	5		
Basic rules	6		
Transport	6		

 Españolé Ih Valencia
 @espanole_ih_Valencia

SCHOOL ADDRESS:
 C/ Caballeros, 36. 46001 Valencia
 OPENING HOURS:
 8:30 – 18:00 Monday to Friday
 TEL: +34 96 353 04 04
 WHATSAPP: +34 604 118 959
 EMERGENCY TEL: +34 663 161 151
 MAIL: info@ihvalencia.com
 WIFI LAN: Alumnos
 WIFI CODE: lavidaespanole



Welcome to Españolé Ih

Dear student,

Thank you for choosing us! 🇪🇸

The Españolé Ih Valencia team is happy to welcome you to our school and wishes you a successful and exciting language adventure.

In order to improve your overall ability in Spanish, you will practice it as much as possible during your stay. You will also be immersed in the language during the cultural visits, sports, outings and excursions.

We will do our best to ensure you make the most out of this language experience and take wonderful memories back home!

Please read this course guide carefully. It contains important information that you need to know before packing and starting off your trip.

We wish you a happy stay at our school!



Cristina Navarro
School director

1. Arrival and first day

The transfer service is optional. If you book our transfer service, we will pick you up at the airport or train/bus station on arrival and take you to the host family or to the residence. Arrivals are normally on Sundays and departures on Saturdays. If you would like to arrive earlier or leave later, please let us know, we can arrange it with an extra cost.

Arrival at the airport/station

If you book the transfer, we need to know your arrival details at least two weeks in advance. As soon as we receive them we'll confirm your transfer.

On arrival our representative will be waiting for you at the arrivals hall of the airport/station, after passport control and customs, holding a sign with your name on it.

If you cannot find your driver, look around you, stay in the arrival hall and wait a little longer. If you still haven't found the school representative after 10 minutes, then go to the tourist info office, call the school emergency phone number (0034 663 161 151) and wait there.



Your first day

Schedule for the first day

On the first day you'll have to be in the school at 08:30. Your host family or programme leader (if you live in the residence) will accompany you and will make sure you know how to go back home.

Placement test

There will be a level test (only spoken if you have already taken the online written test). You cannot fail the test; it is designed to assess your language skills in order to place you in a class corresponding to your level.

Once you finish your test, you will have a Welcome meeting where you will receive useful information and get to know other new students and the staff of the school.

Once the tests have been marked, every student is placed in a group and the classes/activities begin.

If you are a complete beginner of Spanish you don't have to take the level test but you will participate in the welcome meeting.

2. The Spanish course

Course material

The school will provide you with various types of course material, including original course books, magazines and newspapers. Students can also make use of audiovisual aids. You must bring your own pens and notebooks.

Attendance

You must attend classes every day and sign in the class register in the reception desk before entering the class.

In case of illness, you must inform the school staff (the host family/residence staff will contact us if you have to stay at home), who will take you to the doctor if necessary.

In case there's a public holiday during the course period there will be no class but there will be a full day excursion organised.

Changing levels

If you feel that your class is too easy or too difficult for you, you can talk to your teacher or to the Academic director and they will find a solution. It is also possible that your teacher suggests you to change levels if he/she sees that your level of Spanish does not match the level of the class.

Course certificate

At the end of the course you will receive a report and a certificate. The report is an evaluation written by the teachers about the progress you have made. The certificate is a diploma with all the details about the course (personal data, level, duration, assistance, etc.). In case of unjustified absence that exceeds 10% of the duration of the course you will not receive the certificate.

3. Accommodation

In host family

We recommend you to call or send an email to your host family a few days prior to your arrival in order to establish a first contact with them.

🛏 Bedroom

It is usually shared with another student of the school, who usually speaks a different language (unless the student has specifically requested to be placed in the same family as a friend). The room includes beds, storage space and study space.

🚿 Bathroom

It is usually shared with the family.

🍽 Meals and special diets

You will receive full board in the host family. Breakfast, lunch and dinner. Lunch can be packed and you can take it to school or if you prefer you can go back to have lunch at home. Tell your family in advance about what kind of lunch you would like to have every day.

Please let us know about any special diets before your arrival and talk to your host family about it upon arrival.

🛏 Linen and towels

Bed linen and towels are provided by the host families and changed every week. You should bring towels for the beach, swimming pool and sports activities.

🧺 Laundry

The family will do the laundry on a weekly basis. Please ask them on the first day where you can leave the laundry to be washed.

🧹 Cleaning

The room will be cleaned once a week. You are expected to keep your room tidy so that your host is able to clean it properly.

🔑 Key

The family might give you the key to the house in case you will need it.

In residence

Our residence is located just 6 minutes walking to the school, it has capacity for 35 students and it's surrounded by all the interesting sites of the city. There is school staff living there who take care of our students 24h. There are student common rooms with TV and games. There's WIFI all over the building.

🛏 Bedroom

The residence has double, triple and quadruple rooms with shared bathroom. You'll share the room with other students of the school, who usually speak a different language (unless the student has specifically requested to be placed in the same room with a friend).

🍽 Meals and special diets

You will have full board in the residence: breakfast, lunch and dinner. Please let us know about any special diets before your arrival and confirm them upon arrival.

🛏 Linen and towels

Bed linen and towels are provided and changed every week. You should bring towels for the beach, swimming pool and sports activities.

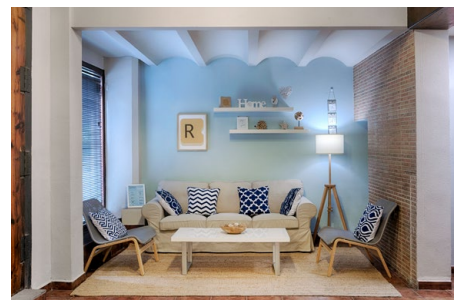
🧺 Laundry

There are laundry machines where you can do your laundry, they are free. There are also ironing facilities.

🧹 Cleaning

The room will be cleaned once a week. Please keep your room tidy so that our staff is able to clean it properly.

Address of the residence: C/Balmes, 17. 46001 Valencia.



Basic rules

In order to ensure that all students make the most of their stay in their accommodation students are required:

- Maintain their room clean and tidy.
- Make the bed in the morning.
- Ask permission before inviting people to the house or residence.
- Don't make noise or disturb the family members or other students staying in the residence.

In the host family:

- Ask the family if they can use the kitchen.
- Call the family if they are late for meals.
- Ask permission before using the telephone and pay for all calls made from the family's phone.
- Don't lose or lend the key of the house.

Transport

On the first school day, families or programme leaders will accompany you to school and explain you how to get to the school either walking or by public transport.

If you need to use public transport, we recommend that you buy a 20 - ride bus/metro pass (approx. cost 21€). For the activities the school provides the transport either private or public.

It's possible to book the "extra supervision service" if parents want the host family/school staff to accompany the children everyday to school and pick them up in the evening after the activities.

4. Activities

Meeting place

It is normally in the school or in the residence (for students accommodated in residence).

Every outing is supervised by the school staff, ensuring the well-being and safety of all students. Specific activities are conducted under the supervision of professional instructors. Participation in all activities is mandatory, and students are responsible for arriving on time at the designated meeting point. Late arrivals may miss the activity, and no substitutions will be provided.

Weekends are typically reserved for excursions, offering students the opportunity to explore some of the most remarkable places in the region.

You can find [the 2025 activity schedule](#) at this link. Please note that the schedule is subject to change.

Example of a weekly programme

	09:30 - 13:20	LUNCH 13:45	14:30 - 16:00	16:00 - 18:20	18:20 - 19:30	DINNER 21:00
Sunday	FREE DAY WITH THE FAMILY / ACTIVITIES IN THE RESIDENCE /ARRIVALS AND DEPARTURES					
Monday	SPANISH LESSONS	LUNCH 🍴	FREE TIME 🎲	GYMKHANA IN THE CITY AND BBQ IN THE SCHOOL		DINNER 🍴
Tuesday	VISIT TO THE CITY OF ARTS AND SCIENCES - HEMISPHERIC	LUNCH 🍴	SPANISH LESSONS		FREE TIME 🎲	DINNER 🍴
Wednesday	SPANISH LESSONS	LUNCH 🍴	FREE TIME 🎲	VISIT TO VALENCIA FOOTBALL STADIUM + BIKE TOUR IN THE RIVERBED		DINNER 🍴
Thursday	VISIT TO MERCADO CENTRAL AND COOKING WORKSHOP: PAELLA IN THE SCHOOL	LUNCH 🍴	SPANISH LESSONS		FREE TIME 🎲	DINNER 🍴
Friday	SPANISH LESSONS	LUNCH 🍴	FREE TIME 🎲	AFTERNOON GAMES AT THE BEACH 🏐		DINNER 🍴
Saturday	FULL DAY EXCURSION TO AQUOPOLIS PARK					

5. Supervision and security

Students are expected to attend lessons and activities as scheduled. Students have to respect the curfews indicated below.

Students have to make sure they know how to get to the host family/ residence, their phone number, the school emergency number, and also make sure that both the school and the host family know the student's mobile phone number.

If a problem arises, the teen coordinator is available 24 hours at the emergency phone number. To make sure everyone is easy to contact students will be asked to join the programme Whatsapp group, it is useful to get last minute information about the classes or activities and also to ask for help, advice or any other thing that might be needed by the students during their stay.

**Summer camp
emergency number:**

📞 📞 +34 667667639

**The school
emergency number:**

📞 📞 +34 663161151



Free time

During free time, i.e. when the school doesn't offer any activity, students must respect the rules and curfew hours set. During free time, the school cannot be held responsible for the students' behaviour. It is therefore necessary that the students show a certain degree of maturity and autonomy.



Curfews

Students have to respect the following curfews as the latest hour by which they must return home:

From Sunday to Thursday:

All students stay with their accommodation after dinner during the week.
Dinner is normally between 21:00 and 21:30.

Friday and Saturday:

Return to their accommodation by 23:00.

The host family is in charge of enforcing curfew hours and ensuring the smooth running of things throughout the student's stay with the family.

No alternative later curfew can be offered, parents can set earlier curfews. Failure to comply will be notified to the parents.

Parents are asked to confirm their agreement to this arrangement and to ensure their child understands and agrees to abide by the curfew.

6. Insurance and medical care

The programme includes travel and medical insurance (please check limits in the annexe of this document).

Parents must make sure that students also bring their European Health Insurance Card if they are from the EU.

The teen coordinator will ask for it to make a copy on the first school day.



7. Useful info

Internet / WIFI

The school has computers with internet access at students' disposal and there is also WLAN all over the buildings. The WLAN key is shown on the notice boards. There's WIFI in the residence and most of the host families also have WIFI at home.

Pocket Money and ID

We recommend that students bring local currency (Euros) on arrival.

Students are advised not to carry large sums of cash with them at any time and passports and identity cards should not be taken on outings or excursions. We recommend that they leave their original ID and passport at the host family or residence and carry with them a copy of a photo in their mobile phone.

We recommend parents to give their children pocket money to cover small expenses, such as souvenirs, phone cards, snacks or drinks and optional activities. It is also necessary to take into account possible public transportation fees when estimating the amount.

The amount of money the student needs depends very much on age and background. For example: one can of coke is 1€ and a bar of chocolate about 1,50 €.

Amount recommended per week: 80,00€

It is important to adapt the budget to the spending habits of the student.

NOTE TO PARENTS: In case it's needed, once on site you can transfer money to your child via the school if needed.

Therefore, you will need to transfer the money to the school bank account and email us the transfer confirmation. Then, the teen coordinator will give the amount received to the student.

Visits

The rich programme of activities does not leave much time for visits. However, if someone wants to pay a visit to a student, they must, for organisation purposes, inform the teen coordinator at least two days in advance.

Valuables

We strongly discourage students to bring any valuables with them and recommend them to get a suitcase with a lock.

Loss and theft

If students lose or are stolen some of their personal possessions, they should contact the school staff, who will help to look for lost items or can assist them in reporting the theft. If a student loses a personal item or if it is stolen from him/her during an excursion, he/she should immediately report it to the school staff so that they can take the appropriate action.

Weather

Valencia enjoys a mild temperate Mediterranean climate. The average annual temperature is 17°C with warm summers (30°C to 35°C) and very mild winters, rarely below 10°C. There is only light rainfall mainly in Autumn and at the beginning of Spring.

Some days it can be hot and as it's always very sunny we recommend students to wear caps for the sun and use high protection creams.



Credit cards

Most hotels, restaurants and shops in Valencia accept the main credit cards such as American Express, VISA, Mastercard, 4B, Access and Diners Club.

Commercial hours

Most shops are open daily from 10:00 until 20:30, and have a break between 14:00 and 17:00. Some establishments like "El Corte Inglés" and shops in the city centre or supermarkets, are open from 10:00 until 22:00. On Sundays many of the stores in the city centre (C/Colón) and the Corte Inglés are open. Embassies, Ministries and official organizations are usually only open in the mornings until 14:00.

Electricity

Standard electrical voltage in Valencia is 220/240 V AC, 50 Hz. A transformer and/or an adapter might be necessary to use non-Spanish electrical appliances. Adapters are available in most hardware stores.

Phone calls

In order to make international calls you have to dial: 00 + country code + area code + desired number.

If students are going to spend some weeks in Spain, we recommend that they buy a Spanish mobile phone, they can also buy a Sim card for the mobile phones. They should ask our staff at the reception desk for advice.

Banks

The official currency of Spain is the Euro. Money can be exchanged in any of the regular banks. Most banks are open from Monday to Friday between 8:30 and 14:00. Only a few banks open on Saturday mornings. There are 24-hour cash machines around the city, and most (Servired, 4B, etc.) offer international services.

What can I find near the school?

Españolé is located right in Carmen old town, which is a hotbed of activity during the day and transforms at sunset into one of the main streets for nightlife in Valencia. It is surrounded by the most important historical sites of the city.

Around the school there are many little shops, convenience stores, cafes, supermarkets and it's only 5 minutes walking to the Mercado Central.

The shopping centre El Corte Inglés is just 10 minutes away from the school in Colón Street. In the same street there are many stores like Zara, Massimo Dutti, Benetton, Desigual etc as well as cafeterias, cinemas, bookstores...

The area Ruzafa is about 20 minutes walking and it is known by its huge and varied offer of restaurants, cafes and pubs.

8. Departures

If you booked a departure transfer, a few days before departure, the teen coordinator will let you know the time of your departure from your place of accommodation.

You will be picked up at the arranged time at your host family/residence and accompanied to the departure terminal of the airport/station. We will help you to do the check-in and we will accompany you until the passport control before the departure gates.

NOTE TO PARENTS:

If you want your child to be accompanied by an adult to the airport of destination you should book the UM service offered by your airline. The school will charge an extra for this service as our staff will be in charge of the student until boarding the plane.



9. Questions and problems

For any questions please contact your teen coordinator who will always be available to help you.

If you want to talk about your classes, you can talk to your teacher or to the academic director.

For any questions concerning accommodation or the programme of activities, do not hesitate to get in touch with the staff at the reception desk. They will be happy to listen to you and help you.

Please inform the school staff of any problems encountered as soon as possible so that they can find a solution quickly.

10. Useful tips / Check list

Before your arrival at the school

- ✓ Check the validity of your identity card/passport.
- ✓ Check your insurance policies (health, accident, theft, civil responsibility, etc.).
- ✓ Change money in the local currency (small bills) and get a credit card.
- ✓ Prepare a first-aid kit; get the necessary medication.
- ✓ Information about any medical condition or allergy must be communicated to the school prior to arrival and confirmed upon arrival during the briefing with the school staff/the host family.

Check you have the following documents:



CHECK LIST

- ☐ Flight/train ticket, passport/ID card
- ☐ Accommodation and/or school contact details
- ☐ Local currency
- ☐ Copy of your travel and healthcare insurance
- ☐ Important addresses and phone numbers
- ☐ Do not forget to put a tag on your luggage with your name and the address of the school on it.
- ☐ Photocopy or photo of your passport/identity card
- ☐ Before your departure from the school, check that you have your passport and flight tickets.

11. In case of emergency

THE FREE PHONE FOR ALL EMERGENCIES IN SPAIN IS 112

1. We recommend that students always carry with them:

- a. A photocopy of their passport.
- b. Their medical insurance card
- c. The address of the school and of their accommodation.

2. In any case of emergency students should first phone the school emergency number (+34) 663161151.

12. Rules for Teen summer programmes

- Students must arrive on time for classes and activities.
- Students are not allowed to leave the school during class hours without the prior consent of the school director.
- Mobile phones and other electronic devices are forbidden in the classroom except when indicated by teacher.
- Curfew times: students enrolled in the teenager programme are expected to respect the curfews.
- Students should make sure they are contactable by their family and Españolé International House Valencia by providing a contact mobile phone number.
- Students are not allowed to sleep anywhere else than where they are staying
- Before leaving the family home/residence, the student should make sure that:
 - the family/programme coordinator know what they will be doing (if they are doing something other than attending classes);
 - the student knows the scheduled time for the main evening meal;
 - the family/programme coordinator knows what time the student expects to be back;
 - the student has the correct contact details for the family/residence.
 - the family/programme coordinator has the correct contact details for the student
 - the family/programme coordinator knows who the student is going out with
(If students go out in the evenings, they must meet with their friends, NOT go out alone.)
- If the student expects to be home later than scheduled, because of delays or changes of schedule, he/she should inform the family/programme coordinator, immediately by phone.
- Family meals form an important part of the junior student's homestay experience and the student should make every effort to take these meals with the family.
- A junior student is expected to abide by the programme rules when staying at the homestay family or residence.
- Students should be encouraged to familiarise themselves with the city and its transport system during the first few days of their stay.
- Students must follow the instructions given by their teacher or social programme person during social programme activities.
- Any damage to the school and/or accommodation facilities will be charged to the student responsible for the damage.
- Students must follow Spanish Law, which includes the following:
 - Under 18s cannot buy nor drink alcohol (and cannot have alcohol at home).
 - Under 18s cannot buy cigarettes.
 - Under 18s cannot drink alcohol in pubs, bars and cafes.
- If a student's behaviour becomes unacceptable (in the school's opinion), the student will be given one written warning (also sent to parents / guardians). If unacceptable behaviour occurs again, the school will order the student to leave the school immediately and with no refund of fees.
- Please note that the school may ask the student to leave immediately and with no written warning, if the behaviour is very serious in the school's opinion. Parents must arrange for their child to return home as soon as possible, at the expense of the parents/guardians.

13. Some photos

